



Just Signed!



Rancho Carmel Plaza

10155-10195 Rancho Carmel Dr, San Diego, CA 92128

IDEAL FOR COFFEE, BAKERY, HEALTH & FITNESS, PET GROOMING, AND QUICK SERVE FOOD



Rancho Carmel Plaza

10155-10195 Rancho Carmel Drive

For Lease



Property Highlights

- Located at the signalized intersections of Rancho Carmel Drive and Ted Williams Parkway, just off the I-15 freeway
- Nearby area retailers include: Costco, The Home Depot, Trader Joe's, Ross, Nordstrom Rack, Marshall's, TJ Maxx, PetCo, Best Buy, Staples, 24 Hour Fitness, Floor & Decor, BevMo, Ulta, Party City and more!
- Per year, Rancho Carmel Plaza receives approximately 330.1K visits from consumers, 98.9K visitors and their average dwell time per visits is 84 minutes (Source: Placer AI)
- Available Suites
 - A106 - 1,209 SF
 - A108 - 1,203 SF
 - A114 - 2,233 SF
 - A118 - 1,268 SF
 - C100 - 1,860 SF | End cap fronting Rancho Carmel Drive

Demographics	1 Mile	3 Miles	5 Miles
2024 Population - Current Year Estimate	14,996	110,086	273,410
2029 Population - Five Year Projection	14,901	111,745	274,865
2024 Average Household Income	\$143,995	\$188,780	\$195,474
2029 Average Household Income	\$168,358	\$214,863	\$222,128
2024 Housing Units	6,003	40,843	98,683
2024 Households - Current Year Estimate	5,782	39,304	95,326
2029 Households - Five Year Projection	5,856	40,695	97,784
2024 Daytime Population	10,659	92,417	252,195

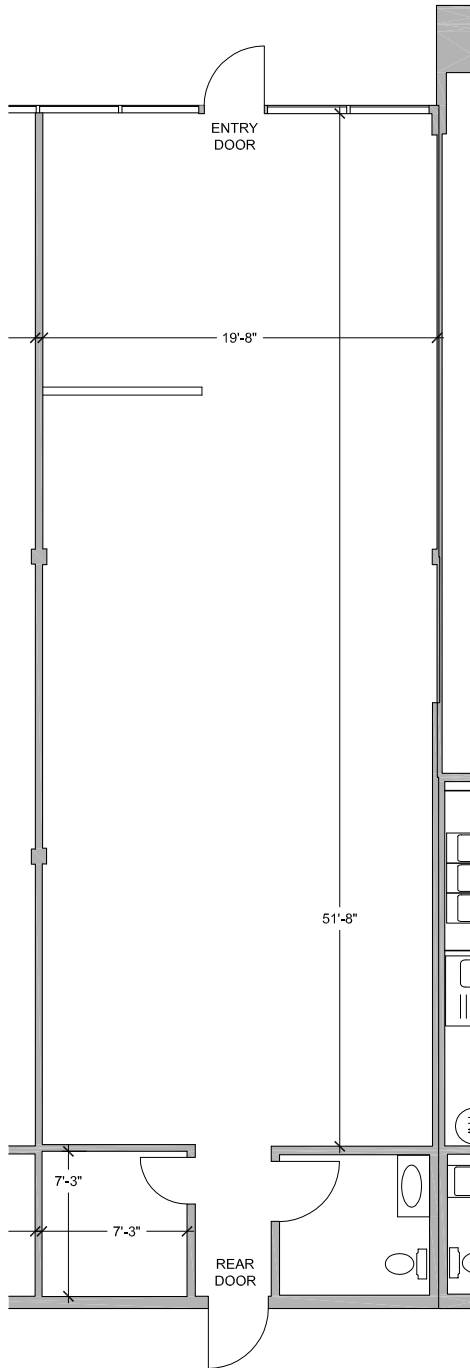


This site plan is not a representation, warranty or guarantee as to size, location or identity of any tenant, and the building, improvements, parking, ingress and egress are subject to such changes, additions and deletions as the architect, Landlord or any governmental agency may direct. Any specified tenant referenced herein is subject to change, deletion, change of location, etc. at any time without prior notice.

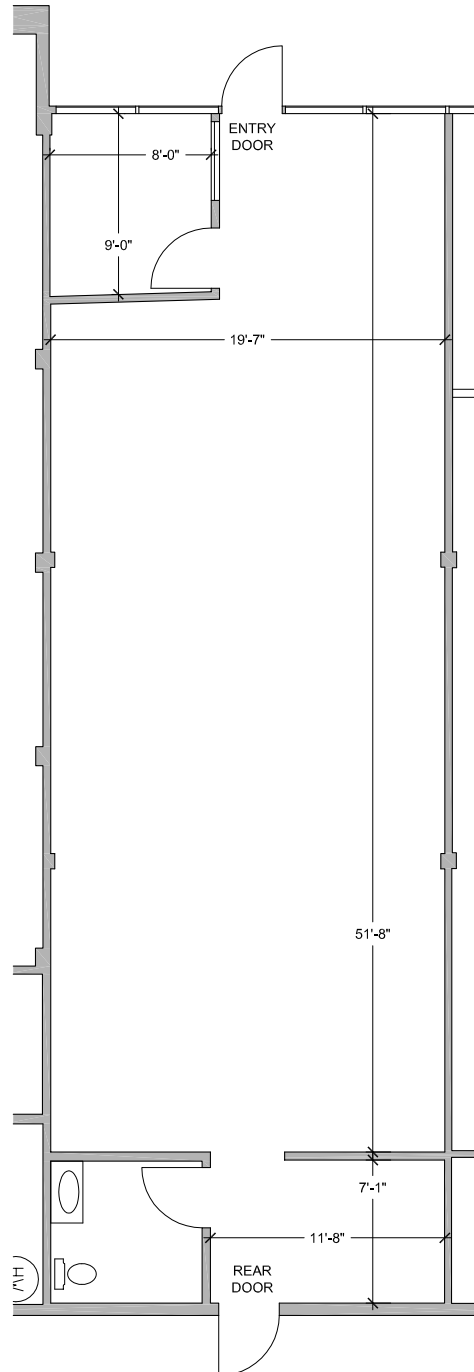
Available | 1,268 SF



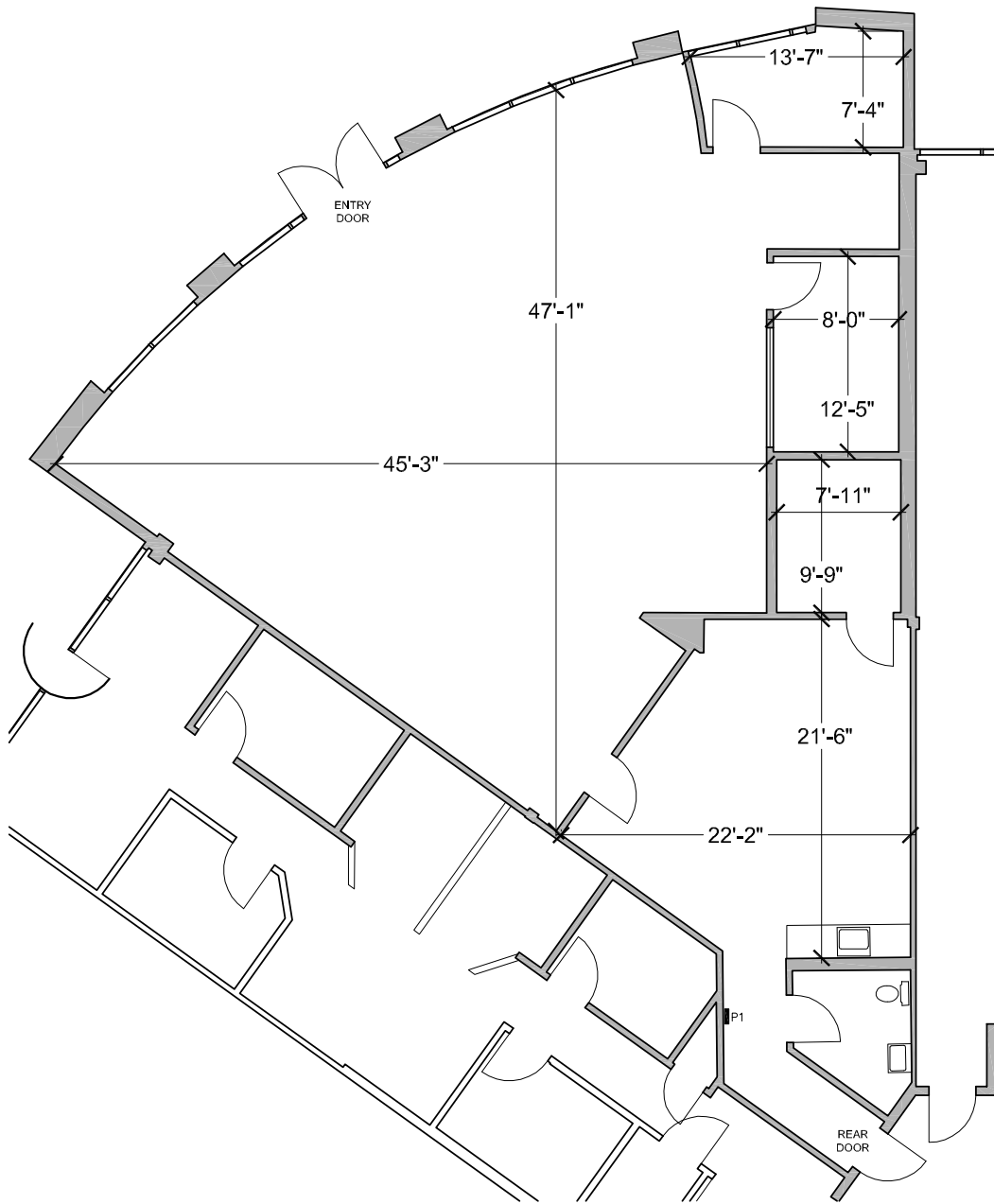
Suite A106



Suite A108

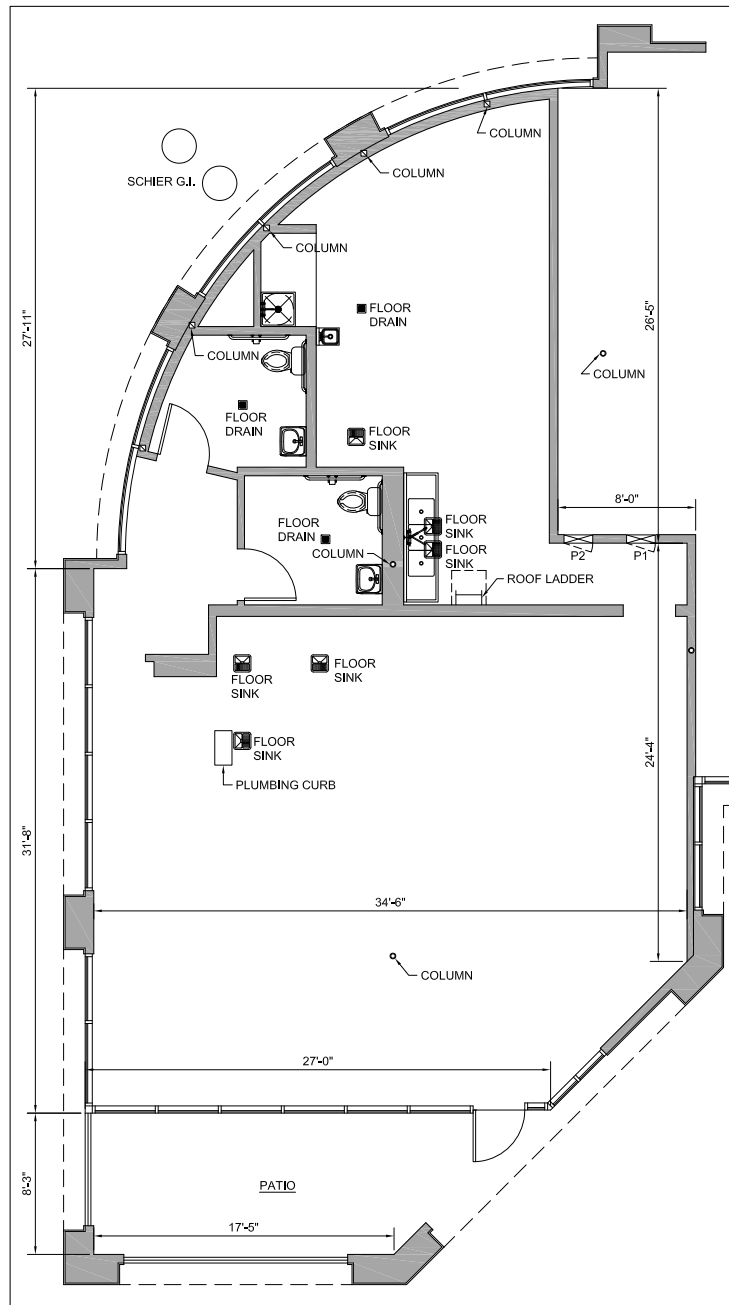


Suite A114



Suite C101

Former Starbucks/Restaurant Space





Contact Us

Reg Kobzi

Senior Vice President
+1 858 546 4604
reg.kobzi@cbre.com
Lic. 00917639

Joel Willson

First Vice President
+1 858 546 4651
joel.wilson@cbre.com
Lic. 01237516

Michael Peterson

First Vice President
+1 858 646 4749
michael.peterson@cbre.com
Lic. 01969314

Lane Robertson

Associate
+1 858 646 4733
lane.robertson@cbre.com
Lic. 02206700

©2024 CBRE, Inc. All rights reserved. This information has been obtained from sources believed reliable but has not been verified for accuracy or completeness. CBRE, Inc. makes no guarantee, representation or warranty and accepts no responsibility or liability as to the accuracy, completeness, or reliability of the information contained herein. You should conduct a careful, independent investigation of the property and verify all information. Any reliance on this information is solely at your own risk. Photos herein are the property of their respective owners. Use of these images without the express written consent of the owner is prohibited. CBRE and the CBRE logo are service marks of CBRE, Inc. All other marks displayed on this document are the property of their respective owners, and the use of such marks does not imply any affiliation with or endorsement of CBRE.